

Maintenance contractor reduces fuel costs by **£1,600** per vehicle, per year

Background

Murvic Contracts (www.murvic.com) carry out a variety of commercial and domestic building and civil engineering projects throughout the UK. With over 30 years experience in the Civil Engineering and Building industry, today the company has a small fleet of vans and conduct projects of all sizes from garden room extensions to larger refurbishment projects.

Due to the large number of projects their tradesmen undertake, and the distances they cover, managing fuel usage during and after business hours has traditionally been extremely difficult. To add to the complexity, tradesmen often take vehicles home for private use, however this must be disclosed and the fuel reimbursed. Not surprisingly, without an accurate way of monitoring out-of-hours use, private mileage claims were often minimal.



The Solution

Driven by the constant need to reduce operating costs, Murvic Contracts identified the benefits a fleet tracking system could have for their business. Following initial research, the company identified two possible solution providers in ROAD ANGEL Fleet and Tracker®, and after further investigation and demonstrations by both companies decided to fit ROAD ANGEL Fleet Live Track units to all of their transit vans. This was partly due to the substantial cost saving compared to the Tracker® solution, the ease of use of the ROAD ANGEL Fleet tracking portal, and the reputation ROAD ANGEL holds within the automotive industry. Costing only 50p per vehicle per day, the system delivers:



- Exceptional value for money, paying for itself in as little as six months
- Effortless ability to monitor out-of-hours usage by the way of intelligent reporting
- The ability to track and recover stolen vehicles
- The automated capture of mileage and journey data
- A suite of powerful reporting tools including journey summaries, vehicle and fleet day-summaries, servicing intervals, over speed and idle times, among others

Benefits

Murvic Contracts immediately experienced a reduction of £1,500 per month in fuel costs across their fleet, mainly due to the increased accuracy of monitoring private mileage. Duncan Murray, General Manager of Murvic Contracts commented:

“...it's amazing, our tradesmen have almost completely stopped using the company vans after work and on weekends, which has on average reduced our monthly fuel bills by £1,500. If they do use the company vans out-of-hours, they are always accurate and on-time with their private mileage claims, which was very difficult to achieve and enforce before the system was installed”

Productivity of their tradesmen has also increased by “at least one hour per day, per man”, purely due to the knowledge that their location is being monitored. A van has also been stolen since the installation of the Live Track units. Its location was tracked on the ROAD ANGEL Fleet portal, and even though the vehicle had been wrecked and used for parts, the information from the tracking system was invaluable in bringing those responsible to justice. In total, Murvic Contracts save over £18,000 in fuel costs across their entire fleet every year, and with the system costing only 50p per vehicle per day, it is an investment that has helped reduce operating costs whilst delivering greater productivity – vital at a time where every customer and every penny counts!

For more information please contact ROAD ANGEL Fleet on 01327 855 586
or visit www.roadangelfleet.com or www.murvic.com



ROAD ANGEL™ Fleet

Live Track is an invaluable tool for organisations who need to dynamically schedule or divert drivers to new calls, enhance customer service with accurate forecast of arrival time, track high value loads and reduce the overheads of their mobile workforce.

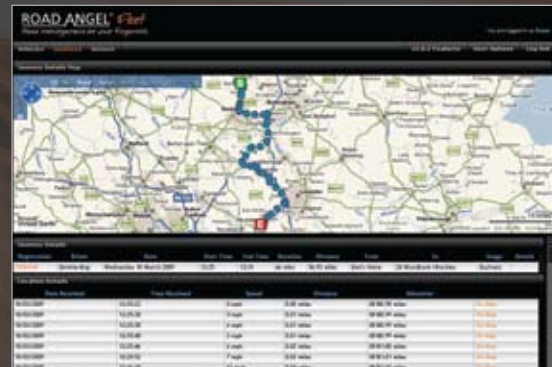
The benefits the Live Track system can bring include:

- Reduced business mileage
- Reduced fuel costs
- Reduced accidents and insurance costs
- Automated reporting, streamlining expense claims
- Assisting in your duty of care compliance
- Improved and reduced vehicle maintenance

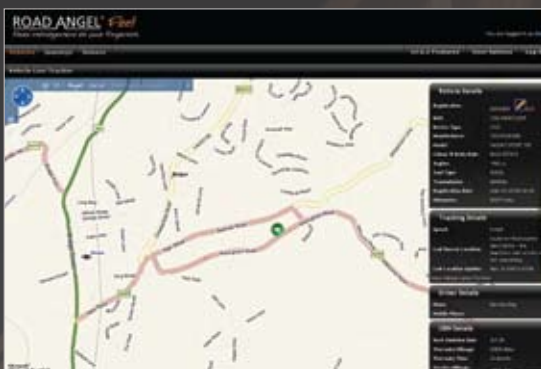
The following is a selection of screen shots of the system:



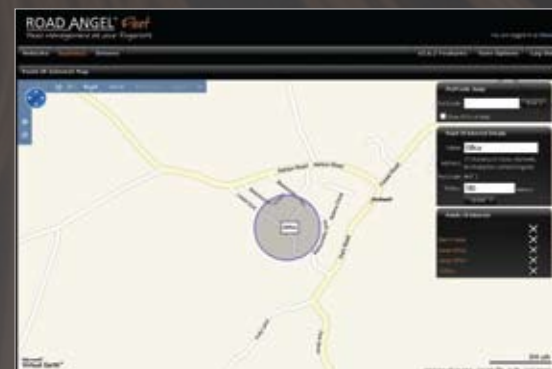
Bird's eye view



Breadcrumb Trail



Standard Map Tracking View



Point of Interest (POI)

Reporting capabilities:

- Journey summary report
- Vehicle day summary report
- Mileage records (user nominated as personal or business)
- Working hours
- Out of hours usage
- Stopped time
- Driver Fatigue Alerts
- Journey start and end point – date, time and location

Real-time information includes:

- Ignition status on/off
- Current speed and direction
- 'Breadcrumb trail' view of journey route and speeds
- Journey speeds – maximum and average

- Current odometer reading
- Service due and overdue
- RFL due
- MOT due
- Cambelt replacement due
- End of warranty
- Vehicles with missing service details

- Detailed journey history
- Idle time
- Over-speed reporting

**Pays for itself
in as little as
6 months**